

*Chapter***6*****Stock Information*****6.1 Introduction**

This chapter describes the features and functions of online stock information option provided by HwangDBS-E'Invest system:

- Real time stock information
- Intra-day chart
- Favourite stocks watchlist
- Stock detail

<u>Item</u>	<u>Description</u>
B.Prc	The highest buy order price at which there are no sell orders at that price or lower
S.Prc	The lowest sell order price at which there are no buy orders at that price or higher
S.Qty	The lowest sell order quantity for the 1 st best sell price
Ldone	Last matched price
Volume	Total volume traded
Change	Price change
Chg %	Price change in percentage
B/S	Last trade done status

Display convention used in stock information:

<u>Item</u>	<u>Description</u>
Price – Green	denotes price higher than previous close
Price – Red	denotes price lower than previous close
Price – Yellow	denotes price unchanged
Stock – White	Main Board stock
Stock – Light blue	Second Board stock
Stock – Gold	MESDAQ stock
Stock – Red	Suspended stock
Stock – Red background	Stock in PN4 condition

To get access to Stock listing:

Step	Action
1.	Select QUOTES from main menu option.
2.	Select ALL COUNTERS from sub menu option.

Ω You will have to install Java software to view stock prices. To do so, please click on RECENT DEAL sub-menu under QUOTES menu. The system will prompt you to download and install the program. Stock price is automatically updated.

6.2.1 Function Bar



1. Select/re-arrange column
2. Exchange Code
3. Filter pull-down menu
4. Search input box
5. Search button
6. Display all stocks
7. Display favourite stocks
8. Forward/backward

6.2.2 Status Bar

When an order is confirmed or matched by the Exchange, a message will be displayed on status bar. Any new message received from your dealer's representative will also be displayed on status bar as alert.

[11:06:07] CONFIRM CANCELED: 8133 PSCI Sell 1000 shares at \$12.200

To list all messages displayed, double click on status bar. The screen below is displayed.



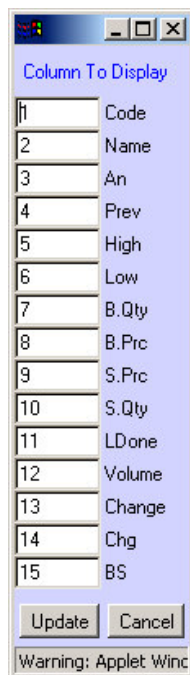
Ω Messages at status bar will be cleared upon applet refresh.

6.2.3 Select/Re-arrange Display Column

The following is a step-by-step process to select and re-arrange display columns of Stock listing.

Step	Action
------	--------

1. Click  icon.



2. Edit the numeric characters beside column name to re-arrange column.
3. Delete the numeric characters beside column name to delete the column.
4. To confirm, click UPDATE button. To cancel, click CANCEL button.

6.2.4 Stock Display Filter

The following is a step-by-step process to filter stock display on Stock listing.


Step	Action
------	--------

1. Select filter option from Filter pull-down menu.

6.2.5 Search stock

The following is a step-by-step process to search stock.



Step	Action
------	--------

1. Enter stock code or short name in Code/Name
 2. Press ENTER
- OR
3. Click  icon.

6.2.6 Switching between Favourite and All Stock listing

Follow the steps below to change display between All stocks listing and Favourite Stock listing.

Step	Action
------	--------

1. Click  icon to display All Counters listing.
2. Click  icon to display Favourite Counters listing.

6.2.7 Forward and Backward Display

To move around the display page on Stock listing applet, follow the steps below:

Step	Action
------	--------

1. Click  icon to display first page.
2. Click  icon to display previous page.
3. Click  icon to display next page.
4. Click  icon to display last page.

6.2.8 Click column to sort

All columns available in stocks listing can be sorted by ascending and descending order. Follow the steps below to sort each individual column:

Step	Action
------	--------

1. Click column Code to sort by stock code.
2. Click column Name to sort by stock name.
3. Click column An to sort by announcement indicator.
4. Click column Prev to sort by previous trading day closing price.
5. Click column High to sort by highest traded price.
6. Click column Low to sort by lowest traded price.
7. Click column B.Qty to sort by accumulated buy quantity.
8. Click column B.Prc to sort by current best buy price.
9. Click column S.Prc to sort by current best sell price.
10. Click column S.Qty to sort by accumulated sell quantity.
11. Click column LDone to sort by last traded price.
12. Click column Volume to sort by volume traded in lots.
13. Click column Change to sort by price change (top gainers and top losers).
14. Click column Chg % to sort by price change in percentage.
15. Click column B/S sort by last trade status.

6.3 Intra-day Chart

HwangDBS-E'Invest system provides intra-day chart for investor to have performance overview for a particular stock.

Follow the steps below to get access to intra-day chart.

Step	Action
------	--------

1. Select a stock from Stock listing.
2. Double-click on the selected stock and a pop-up menu is displayed.



- Click INTRADAY CHART option from the pop-up menu. Intra-day chart is displayed on screen.

Ω Move your mouse between the charts to display trade information at a particular time.



Screen 6.2

6.4 Favourite Stocks

You can set up list of stocks you are interest in by using favourite stocks feature.

Refer to the following step-by-step guide to add a stock to your favourite list:

Step	Action
------	--------

1. Select a stock from Stock listing.
2. Double-click on the selected stock and a pop-up menu is displayed.




3. Select ADD TO FAVOURITE by clicking on the button.

6.4.1 Switching to Favourite stock

Follow the steps below to change display to Favourite Stock listing.


Step	Action
------	--------

1. Click  icon to switch display to Favourite Stock listing.

6.4.2 Delete a stock from Favourite Stock listing.

Follow the steps below to delete a stock from your Favourite Stock listing:

Step	Action
------	--------

1. Switch to favourite stock display by clicking  icon.
2. Select a stock you wish to delete from the Favourite Stock listing.



3. Double-click on the selected stock and a pop-up menu is displayed.
4. Select REMOVE FROM FAVOURITE by clicking on the button.

6.5 Stock Detail Chart

HwangDBS-E'Invest system provides stock detail for investor to have a detailed snapshot for a particular stock.

Refer to the following step-by-step guide to get access to intra-day chart:

Step	Action
------	--------

1. Select a stock from Stock listing.
2. Double-click on the selected stock and a pop-up menu is displayed.



- Click STOCK DETAIL option from the pop-up menu. Stock Detail is displayed on screen.

Price information

Technical chart for selected stock

News for selected stock

Stock information summary

Code	Name	Close	High	Low	LDone	Volume	Change	Value
1155	MAYBANK	11.5	11.400	11.200	11.300	13,405	-0.200	15,152,250

B. Qty	B. Price	S. Price	S. Qty
16802	11.200	11.300	6869
7915	11.100	11.400	11114
2032	11.000	11.500	6141

Market Summary	
Composite Index	937.20 (-2.28)
2nd Board Index	90.33 (-0.65)
Total Vol (Lots)	1,935,985
Total Value	325,225,926
Total Up	157
Total Down	423
Total Unchanged	282
Total Suspended	34
Total Counters	1328

Announcement: 1155

CI-20050810 - 1155 - changes in sub. s-hldr's int. (29b)
 LC-20050808 - 1155 - maybank-employee share option scheme ("scheme")
 GA-20050808 - 1155 - bursa malaysia's lr - dealing by principal officer(s)

STOCK CODE: 1155

BURSA MALAYSIA'S LR - DEALING BY PRINCIPAL OFFICER(S)

SUBMITTED BY / CONTACT PERSON:

BURSA MALAYSIA'S LISTING REQUIREMENTS - DEALING BY PRINCIPAL OFFICER(S) ("POS") OF MAYBANK
 PURSUANT TO CHAPTER 14 OF THE BURSA MALAYSIA'S LISTING REQUIREMENTS, THE FOLLOWING POS HAS TRANSACTED HIS OPTION UNDER MAYBANK GROUP ESOS SHARES AS PER THE TABLE SHOWN BELOW.
 NAME OF PO DATE EXERCISED/SOLD SHARE PRICE (RM) NUMBER OF SHARES % OF MAYBANK'S ISSUED CAPITAL

Screen 6.5

6.6 Historical Chart

Daily price movement and volume traded is kept by HwangDBS-E'Invest system for plotting of technical chart.

Refer to the following step-by-step guide to get access to intra-day chart:

Step	Action
------	--------

1. Select a stock from Stock listing.
2. Double-click on the selected stock and a pop-up menu is displayed.



3. Click HISTORICAL CHART option from the pop-up menu. Chart is displayed on screen.



Screen 6.6

4. Please refer to Chapter 9 Technical Chart for detail.