

# STEPS OF MAKING PAYMENT VIA MAYBANK2U.COM

## IMPORTANT NOTICE

Payment for outstanding purchases must be made **before** 12.30pm on T+3.

Payment for contra loss must be made **on or before** the due date in the Contra Statement.

You must inform your Dealer's Representative after payment has been made.

### Step 1:

Key-in your  
Username and  
Password.

Click on **LOGIN**  
button to proceed.

Welcome to Maybank2u.com Online Financial Services - Microsoft Internet Explorer

File Edit View Favorites Tools Help

Back Forward Stop Refresh Home Search Favorites History Mail

Address [https://www.maybank2u.com.my/mbb/scripts/mbb\\_login.jsp?do=Login](https://www.maybank2u.com.my/mbb/scripts/mbb_login.jsp?do=Login) Go Links

**Maybank2u.com**  
making every moment count

SECURED CONNECTION

**Member Services**

- First Time Login
- Tell Me More
- How To Sign Up

**Home**

**Welcome**

Please enter your Username and Password to access Maybank2u.com Online Financial Services

Username : abc123

Password : [masked]

Clear Login

**Reminder :** You should never reveal your PIN and/or Password to anyone.  
**Peringatan :** Anda tidak harus mendedahkan "PIN" dan/atau "Password" anda kepada sesiapa pun.

If you forget your PayBills password, please [click here](#).  
If you have difficulty remembering your password, [read this](#).  
If you forget your Internet Banking password, please call Maybank2u.com hotline at 03-2072 7788 (8 am to 12 midnight).

VeriSign Secure Site TRUSECURE CERTIFIED

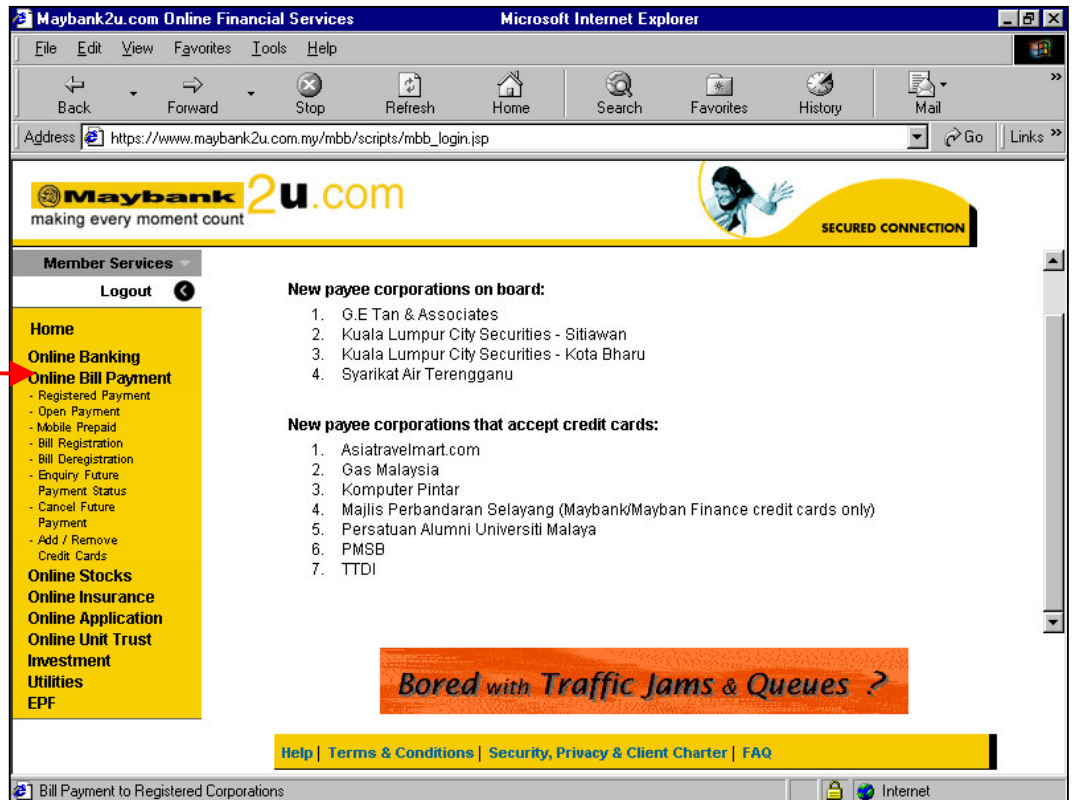
[Help](#) | [Terms & Conditions](#) | [Security, Privacy & Client Charter](#) | [FAQ](#)

Internet

Screen 1

**Step 2:**

Select “**Online Bill Payment**” to see a list of sub-menus.



Screen 2

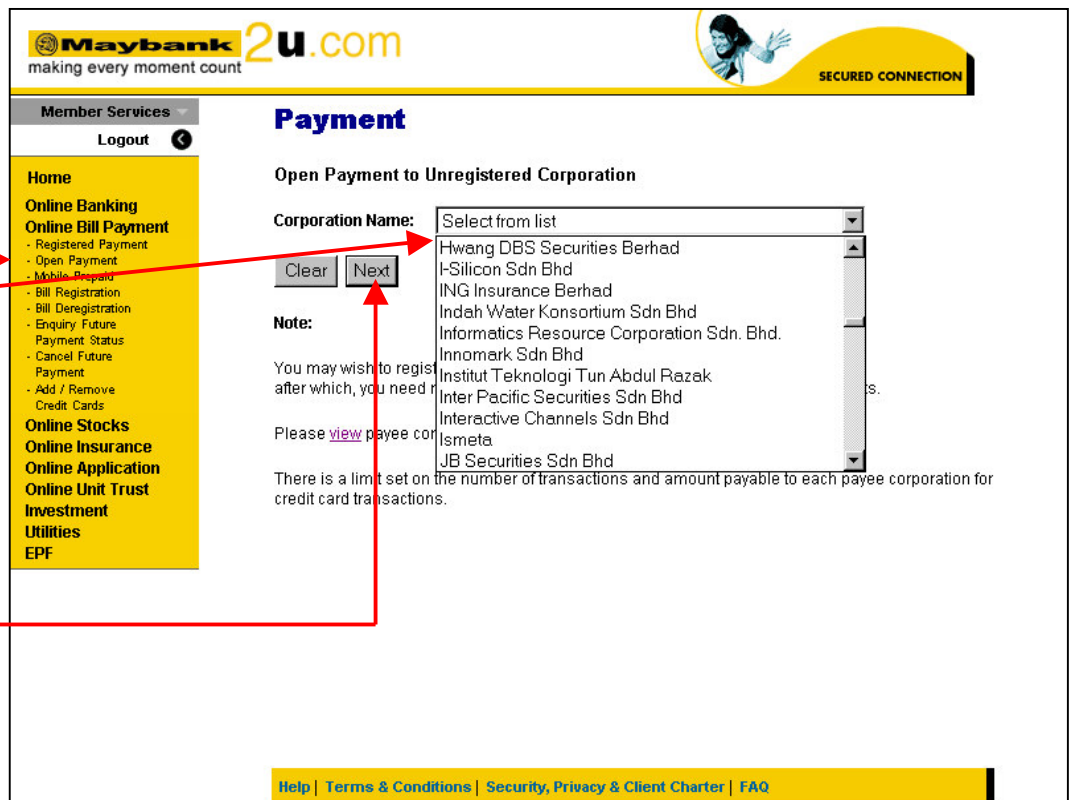
**Step 3:**

Click on “**Open Payment**” from the sub- menu. Alternatively, you may select “**Registered Payment**” if you have registered your payment information under “**Bill Registration**”.

Note: With Bill Registration, Maybank2u will store your Client Code and Remisier Code for future payments.

**Step 4:**

Select “**Hwang-DBS Securities Berhad**” from the drop-down list.



**Step 5:**

Click on **NEXT** button to proceed.

Screen 3

**Step 6:**

Select your bank account from drop-down list (where applicable).

**Step 7:**

Fill in **Client Code**, **Remisier Code** and **Payment Amount**.

Refer to Screen 5 for illustration.

**Step 8:**

Click on **NEXT** button to proceed.

**Member Services**  
Logout

**Home**  
 Online Banking Funds Transfer  
 Online Bill Payment  
 • Registered Payment  
 • Open Payment  
 • Credit Card Payment  
 • Bill Registration  
 • Bill Deregistration  
 • Enquire/Cancel Future Payment  
 • Payment Limit Maintenance  
 • Add / Remove Credit Cards  
 Online Prepaid SMS & Downloads  
 Online Stocks  
 Online Insurance  
 Online Application  
 Online Unit Trust Investment  
 Mobile Financial Services  
 Utilities  
 EPF

**Payment**  
**Open Payment - Online Bill Payment**

**From Account:** Saving Account: 0123456789  
**Corporation Name:** Hwang DBS Securities Berhad  
**Client Code:** 0011A0068 [View Sample](#)  
**Remisier Code :** XYZ  
**Amount:** 5810.22  
 Clear Next

Please contact your Dealer's Representative after you have made payment.  
 For each successful transaction RMD.50 will be charged to your account.  
 Please enter the 3 digits Branch Code followed by the Client Code. For details, click at View Sample link

Help | Terms & Conditions | Security, Privacy & Client Charter | FAQ | Contact Us

Screen 4

**Screen 5 Note:**

Click on "View Sample" to see an example of **Client Code**, **Remisier Code** and **Branch Code**.

To key-in the **Client Code**, you must add the 3-digit Branch Code of your branch in front of your Client Code as shown in the contract note.

**HWANG - DBS SECURITIES BERHAD** (Company No. 119811)  
 18 Participating Companies of Bursa Malaysia Securities Berhad  
 LEVEL 17, 17A, 17B, 17C, 17D, 17E, 17F, 17G, 17H, 17I, 17J, 17K, 17L, 17M, 17N, 17O, 17P, 17Q, 17R, 17S, 17T, 17U, 17V, 17W, 17X, 17Y, 17Z, 17AA, 17AB, 17AC, 17AD, 17AE, 17AF, 17AG, 17AH, 17AI, 17AJ, 17AK, 17AL, 17AM, 17AN, 17AO, 17AP, 17AQ, 17AR, 17AS, 17AT, 17AU, 17AV, 17AW, 17AX, 17AY, 17AZ, 17BA, 17BB, 17BC, 17BD, 17BE, 17BF, 17BG, 17BH, 17BI, 17BJ, 17BK, 17BL, 17BM, 17BN, 17BO, 17BP, 17BQ, 17BR, 17BS, 17BT, 17BU, 17BV, 17BW, 17BX, 17BY, 17BZ, 17CA, 17CB, 17CC, 17CD, 17CE, 17CF, 17CG, 17CH, 17CI, 17CJ, 17CK, 17CL, 17CM, 17CN, 17CO, 17CP, 17CQ, 17CR, 17CS, 17CT, 17CU, 17CV, 17CW, 17CX, 17CY, 17CZ, 17DA, 17DB, 17DC, 17DD, 17DE, 17DF, 17DG, 17DH, 17DI, 17DJ, 17DK, 17DL, 17DM, 17DN, 17DO, 17DP, 17DQ, 17DR, 17DS, 17DT, 17DU, 17DV, 17DW, 17DX, 17DY, 17DZ, 17EA, 17EB, 17EC, 17ED, 17EE, 17EF, 17EG, 17EH, 17EI, 17EJ, 17EK, 17EL, 17EM, 17EN, 17EO, 17EP, 17EQ, 17ER, 17ES, 17ET, 17EU, 17EV, 17EW, 17EX, 17EY, 17EZ, 17FA, 17FB, 17FC, 17FD, 17FE, 17FF, 17FG, 17FH, 17FI, 17FJ, 17FK, 17FL, 17FM, 17FN, 17FO, 17FP, 17FQ, 17FR, 17FS, 17FT, 17FU, 17FV, 17FW, 17FX, 17FY, 17FZ, 17GA, 17GB, 17GC, 17GD, 17GE, 17GF, 17GG, 17GH, 17GI, 17GJ, 17GK, 17GL, 17GM, 17GN, 17GO, 17GP, 17GQ, 17GR, 17GS, 17GT, 17GU, 17GV, 17GW, 17GX, 17GY, 17GZ, 17HA, 17HB, 17HC, 17HD, 17HE, 17HF, 17HG, 17HH, 17HI, 17HJ, 17HK, 17HL, 17HM, 17HN, 17HO, 17HP, 17HQ, 17HR, 17HS, 17HT, 17HU, 17HV, 17HW, 17HX, 17HY, 17HZ, 17IA, 17IB, 17IC, 17ID, 17IE, 17IF, 17IG, 17IH, 17II, 17IJ, 17IK, 17IL, 17IM, 17IN, 17IO, 17IP, 17IQ, 17IR, 17IS, 17IT, 17IU, 17IV, 17IW, 17IX, 17IY, 17IZ, 17JA, 17JB, 17JC, 17JD, 17JE, 17JF, 17JG, 17JH, 17JI, 17JJ, 17JK, 17JL, 17JM, 17JN, 17JO, 17JP, 17JQ, 17JR, 17JS, 17JT, 17JU, 17JV, 17JW, 17JX, 17JY, 17JZ, 17KA, 17KB, 17KC, 17KD, 17KE, 17KF, 17KG, 17KH, 17KI, 17KJ, 17KK, 17KL, 17KM, 17KN, 17KO, 17KP, 17KQ, 17KR, 17KS, 17KT, 17KU, 17KV, 17KW, 17KX, 17KY, 17KZ, 17LA, 17LB, 17LC, 17LD, 17LE, 17LF, 17LG, 17LH, 17LI, 17LJ, 17LK, 17LL, 17LM, 17LN, 17LO, 17LP, 17LQ, 17LR, 17LS, 17LT, 17LU, 17LV, 17LW, 17LX, 17LY, 17LZ, 17MA, 17MB, 17MC, 17MD, 17ME, 17MF, 17MG, 17MH, 17MI, 17MJ, 17MK, 17ML, 17MN, 17MO, 17MP, 17MQ, 17MR, 17MS, 17MT, 17MU, 17MV, 17MW, 17MX, 17MY, 17MZ, 17NA, 17NB, 17NC, 17ND, 17NE, 17NF, 17NG, 17NH, 17NI, 17NJ, 17NK, 17NL, 17NM, 17NN, 17NO, 17NP, 17NQ, 17NR, 17NS, 17NT, 17NU, 17NV, 17NW, 17NX, 17NY, 17NZ, 17OA, 17OB, 17OC, 17OD, 17OE, 17OF, 17OG, 17OH, 17OI, 17OJ, 17OK, 17OL, 17OM, 17ON, 17OO, 17OP, 17OQ, 17OR, 17OS, 17OT, 17OU, 17OV, 17OW, 17OX, 17OY, 17OZ, 17PA, 17PB, 17PC, 17PD, 17PE, 17PF, 17PG, 17PH, 17PI, 17PJ, 17PK, 17PL, 17PM, 17PN, 17PO, 17PP, 17PQ, 17PR, 17PS, 17PT, 17PU, 17PV, 17PW, 17PX, 17PY, 17PZ, 17QA, 17QB, 17QC, 17QD, 17QE, 17QF, 17QG, 17QH, 17QI, 17QJ, 17QK, 17QL, 17QM, 17QN, 17QO, 17QP, 17QQ, 17QR, 17QS, 17QT, 17QU, 17QV, 17QW, 17QX, 17QY, 17QZ, 17RA, 17RB, 17RC, 17RD, 17RE, 17RF, 17RG, 17RH, 17RI, 17RJ, 17RK, 17RL, 17RM, 17RN, 17RO, 17RP, 17RQ, 17RR, 17RS, 17RT, 17RU, 17RV, 17RW, 17RX, 17RY, 17RZ, 17SA, 17SB, 17SC, 17SD, 17SE, 17SF, 17SG, 17SH, 17SI, 17SJ, 17SK, 17SL, 17SM, 17SN, 17SO, 17SP, 17SQ, 17SR, 17SS, 17ST, 17SU, 17SV, 17SW, 17SX, 17SY, 17SZ, 17TA, 17TB, 17TC, 17TD, 17TE, 17TF, 17TG, 17TH, 17TI, 17TJ, 17TK, 17TL, 17TM, 17TN, 17TO, 17TP, 17TQ, 17TR, 17TS, 17TT, 17TU, 17TV, 17TW, 17TX, 17TY, 17TZ, 17UA, 17UB, 17UC, 17UD, 17UE, 17UF, 17UG, 17UH, 17UI, 17UJ, 17UK, 17UL, 17UM, 17UN, 17UO, 17UP, 17UQ, 17UR, 17US, 17UT, 17UU, 17UV, 17UW, 17UX, 17UY, 17UZ, 17VA, 17VB, 17VC, 17VD, 17VE, 17VF, 17VG, 17VH, 17VI, 17VJ, 17VK, 17VL, 17VM, 17VN, 17VO, 17VP, 17VQ, 17VR, 17VS, 17VT, 17VU, 17VV, 17VW, 17VX, 17VY, 17VZ, 17WA, 17WB, 17WC, 17WD, 17WE, 17WF, 17WG, 17WH, 17WI, 17WJ, 17WK, 17WL, 17WM, 17WN, 17WO, 17WP, 17WQ, 17WR, 17WS, 17WT, 17WU, 17WV, 17WW, 17WX, 17WY, 17WZ, 17XA, 17XB, 17XC, 17XD, 17XE, 17XF, 17XG, 17XH, 17XI, 17XJ, 17XK, 17XL, 17XM, 17XN, 17XO, 17XP, 17XQ, 17XR, 17XS, 17XT, 17XU, 17XV, 17XW, 17XX, 17XY, 17XZ, 17YA, 17YB, 17YC, 17YD, 17YE, 17YF, 17YG, 17YH, 17YI, 17YJ, 17YK, 17YL, 17YM, 17YN, 17YO, 17YP, 17YQ, 17YR, 17YS, 17YT, 17YU, 17YV, 17YW, 17YX, 17YY, 17YZ, 17ZA, 17ZB, 17ZC, 17ZD, 17ZE, 17ZF, 17ZG, 17ZH, 17ZI, 17ZJ, 17ZK, 17ZL, 17ZM, 17ZN, 17ZO, 17ZP, 17ZQ, 17ZR, 17ZS, 17ZT, 17ZU, 17ZV, 17ZW, 17ZX, 17ZY, 17ZZ

**CONTRACT NOTE**  
 STAMP DUTY PAID

CLIENT CODE	REMIASER	DELIVERY	CONTRACT DATE	CONTRACT NO.
012345678	XYZ	READY	8/05/02	FW1234

**Please enter the 3 digits Branch Code followed by the Client Code.**

**Client Code** (without Branch Code) **Remisier Code**

**Branch Code No:**

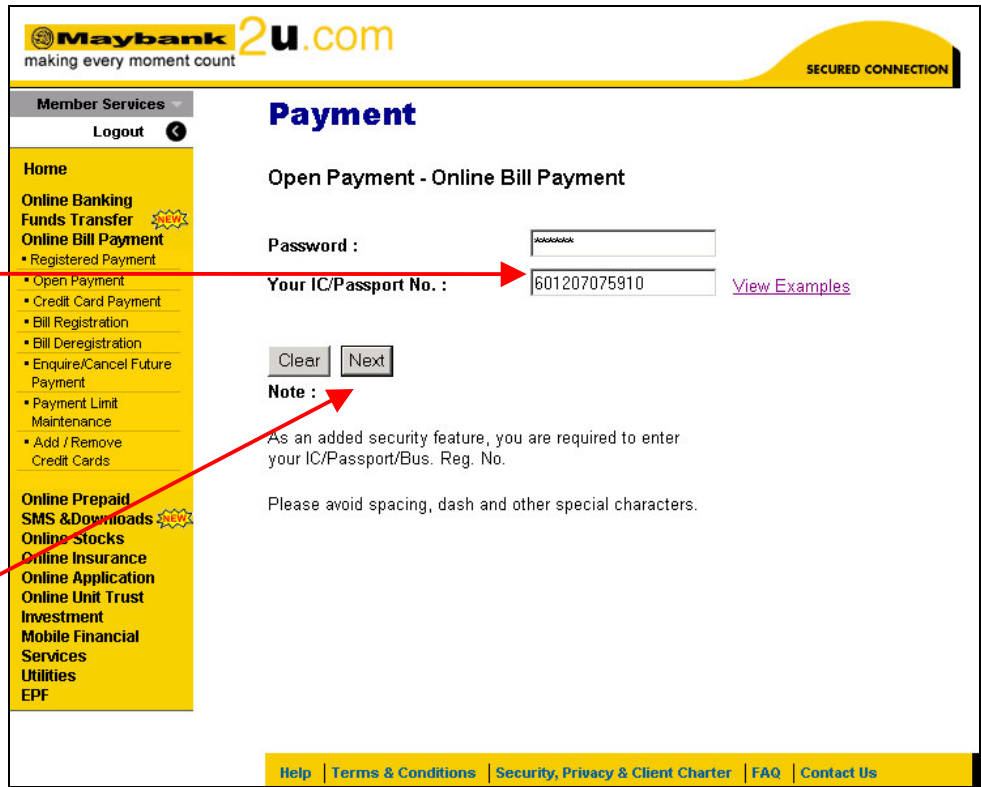
001 Penang	009 Taman Tun, KL
002 Shah Alam	010 Subang Jaya
003 Taiping	011 Sg. Petani
004 Johor Bahru	012 Cheras, KL
005 Kuching	014 Bukit Bintang, KL
006 Bukit Mertajam	015 Ipoh
007 Seremban	016 Bintulu
008 Kota Kinabalu	

**Sample:**  
 Client Code : 1A0068  
 Location : Penang (Branch Code 001)  
**Client Code: 0011A0068**  
**Remisier Code: XYZ**

Screen 5

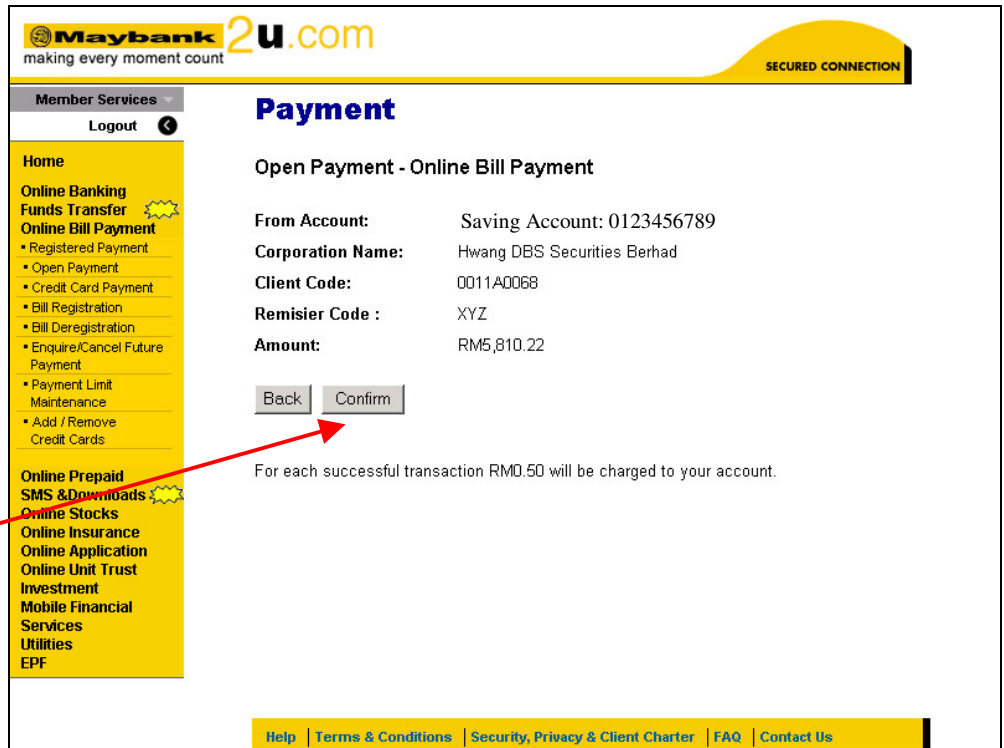
**Step 9:**  
Key-in your **Password**  
and **NRIC or Passport**  
**Number.**

**Step 10:**  
Click on **NEXT** button to  
proceed.



Screen 6

**Step 11:**  
Click on **CONFIRM**  
button to complete the  
transaction.



Screen 7

**Step 12:** Please inform your Dealer's Representative that you have made payment with the following details: (1) Date of Payment (2) Mode of Payment: M2U (3) Payment Amount; and (4) Client Code